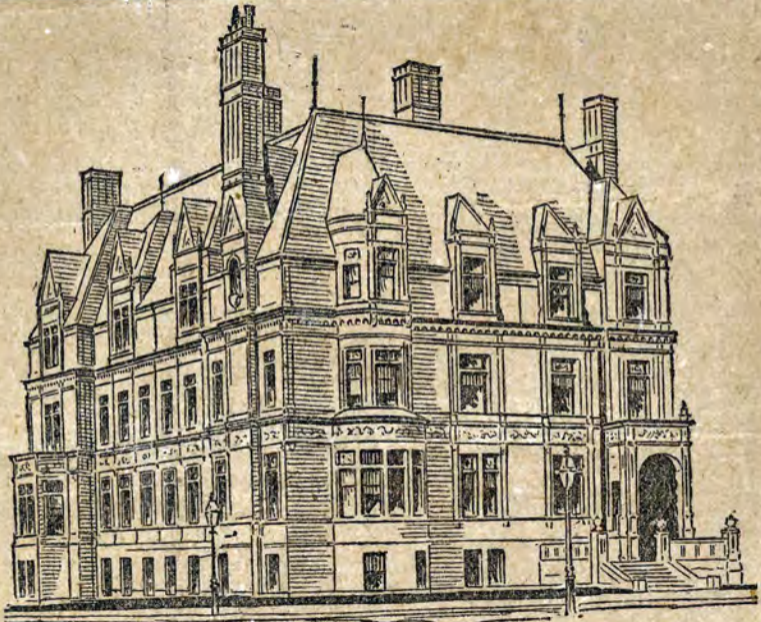




LIEUT.-GOV. AMES' HOUSE.

At the extreme of Commonwealth avenue, so far as it has been built upon, and at its junction with West Chester park extension, stands the "palatial residence" of Lieut.-Gov. Ames, one of the most spacious and commanding edifices for dwelling purposes in the Back bay region. The cut herewith shown fairly represents the proportions and general external features of the building. As will be noticed, these are on a grand scale, no pains or means having been stinted in the production of a house in every way characteristic of and appropriate to a gentleman of great wealth and high position, socially and officially. This

building is of red stone, dependent upon no grotesque, unusual or questionable attempt for striking effects, and pleases rather by its massiveness and the harmony of all its parts than by any catching details or attractions. At present its site affords abundant outlook upon the Charles river and its neighborhood, the hills about Brookline and the southwestern sections, with the large interval lying between. But without doubt this point will, in the no distant future, become a centre of population and "settlement," with its views bounded on every side by building walls and inclosures.



LIEUT.-GOV. AMES' HOUSE.

At the extreme of Commonwealth avenue, so far as it has been built upon, and at its junction with West Chester park extension, stands the "palatial residence" of Lieut.-Gov. Ames, one of the most spacious and commanding edifices for dwelling purposes in the Back bay region. The cut herewith shown fairly represents the proportions and general external features of the building. As will be noticed, these are on a grand scale, no pains or means having been stinted in the production of a house in every way characteristic of and appropriate to a gentleman of great wealth and high position, socially and officially. This

building is of red stone, dependent upon no grotesque, unusual or questionable attempt for striking effects, and pleases rather by its massiveness and the harmony of all its parts than by any catching details or attractions. At present its site affords abundant outlook upon the Charles river and its neighborhood, the hills about Brookline and the southwestern sections, with the large interval lying between. But without doubt this point will, in the no distant future, become a centre of population and "settlement," with its views bounded on every side by building walls and inclosures.



[Undated 10 – clipping about Lieut.-Gov. Ames' House:]



LIEUT.-GOV. AMES' HOUSE.

At the extreme of Commonwealth avenue, so far as it has been built upon, and at its junction with West Chester park extension, stands the "palatial residence" of Lieut.-Gov. Ames, one of the most spacious and commanding edifices for dwelling purposes in the Back bay region. The cut herewith shown fairly represents the proportions and general external features of the building. As will be noticed, these are on a grand scale, no pains or means having been stinted in the production of a house in every way characteristic of and appropriate to a gentleman of great wealth and high position, socially and officially. This

building is of red stone, dependent upon no grotesque, unusual or questionable attempt for striking effects, and pleases rather by its massiveness and the harmony of all its parts than by any catching details or attractions. At present its site affords abundant outlook upon the Charles river and its neighborhood, the hills about Brookline and the southwestern sections, with the large interval lying between. But without doubt this point will, in the no distant future, become a centre of population and "settlement," with its views bounded on every side by building walls and inclosures.



These collections are protected by United States and International copyright laws. Personal non-commercial use of these materials is allowed. Any other use is strictly prohibited without the express written permission of the Dennis Historical Society.